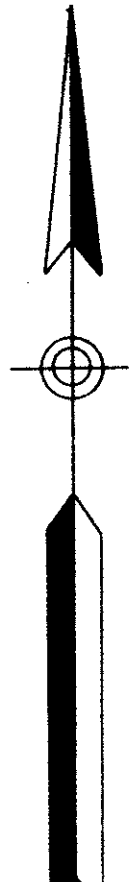
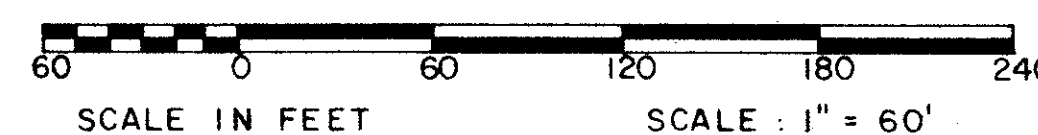


46/4

MAHOGANY BEND OF BOCA WEST - P.U.D.

PARCELS C-4 AND D-4
IN PART OF SECTION 9, TOWNSHIP 47 SOUTH, RANGE 42 EAST
PALM BEACH COUNTY, FLORIDA
IN 2 SHEETS SHEET NO.2

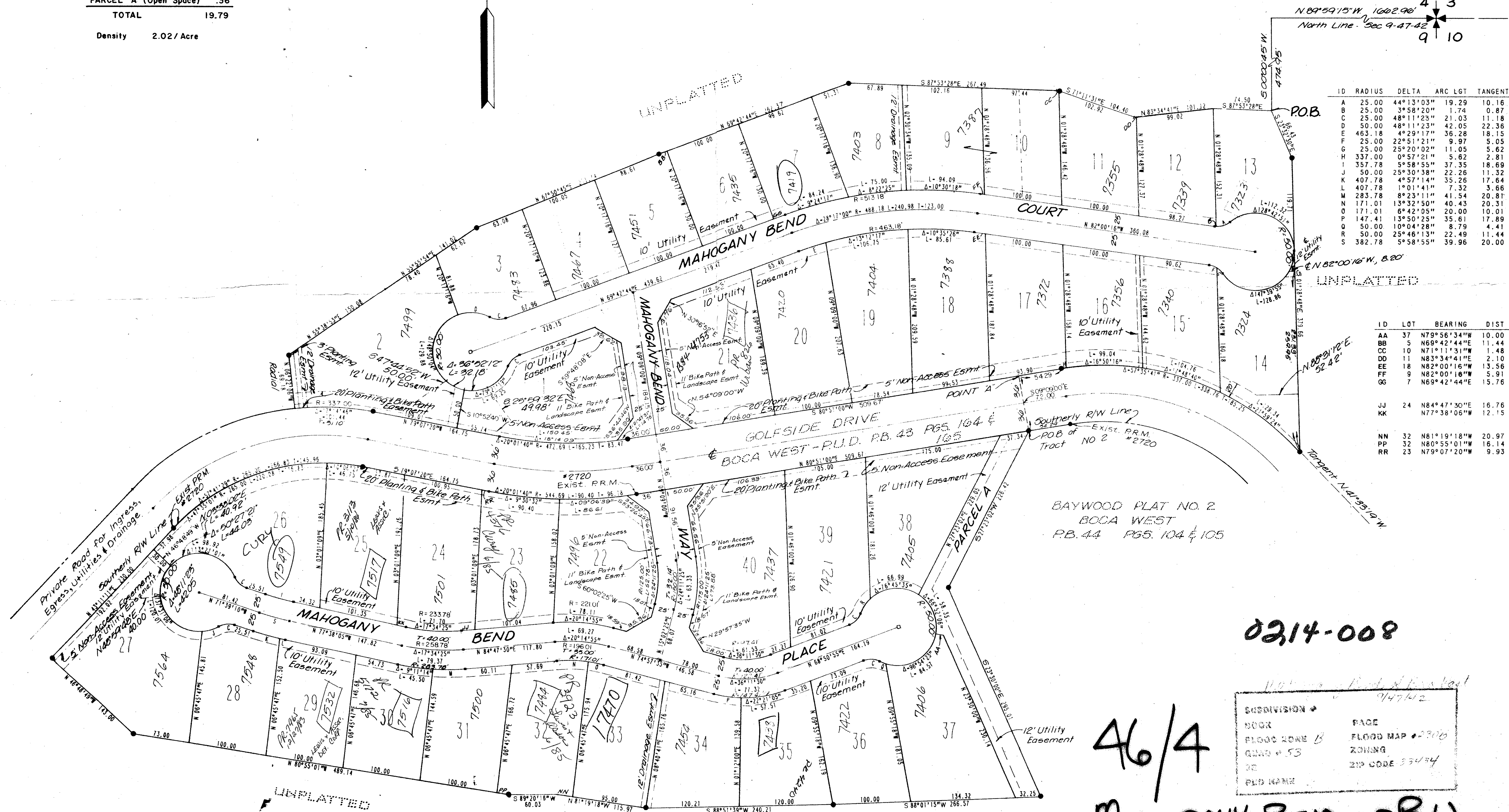
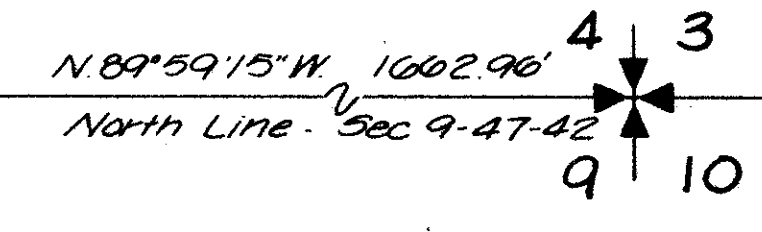
GEE & JENSON
ENGINEERS - ARCHITECTS - PLANNERS, INC.
WEST PALM BEACH, FLORIDA
JANUARY 1983



LAND USE	
40 (Single Family) LOTS	16.20
50' R/W	3.23
PARCEL A (Open Space)	.36
TOTAL	19.79
Density	2.02 / Acre

STATE OF FLORIDA
COUNTY OF PALM BEACH
This plat was filed for
record at M. this day
of 1983, and duly
recorded in Plat Book No.
on Page
JOHN B. DUNKLE
Clerk Circuit Court
By: D.C.

4



ID	RADIUS	DELTA	ARC LGT	TANGENT
A	25.00	44°13'03"	19.29	10.16
B	25.00	3°58'20"	1.74	0.87
C	25.00	48°11'23"	21.03	11.18
D	50.00	48°11'23"	42.05	22.36
E	463.18	4°29'17"	36.28	18.15
F	25.00	22°51'21"	9.97	5.05
G	25.00	25°20'02"	11.05	5.62
H	337.00	0°57'21"	5.62	2.81
I	357.78	5°58'55"	37.35	18.69
J	50.00	25°30'38"	22.26	11.32
K	407.78	4°57'14"	35.26	17.64
L	407.78	1°01'14"	7.32	3.66
M	283.78	8°23'11"	41.54	20.81
N	171.01	13°32'50"	40.43	20.31
O	171.01	6°42'05"	20.00	10.01
P	147.41	13°50'25"	35.61	17.89
Q	50.00	10°04'28"	8.79	4.41
R	50.00	25°46'13"	22.49	11.44
S	382.78	5°58'55"	39.96	20.00

ID	LOT	BEARING	DIST
AA	37	N79°56'34"W	10.00
BB	5	N69°42'44"E	11.44
CC	10	N71°11'31"W	1.48
DD	11	N83°34'41"E	2.10
EE	18	N82°00'16"W	13.56
FF	9	N82°00'16"W	5.91
GG	7	N69°42'44"E	15.76
JJ	24	N84°47'30"E	16.76
KK		N77°38'06"W	12.15
NN	32	N81°19'18"W	20.97
PP	32	N80°55'01"W	16.14
RR	23	N79°07'20"W	9.93

BAYWOOD PLAT NO. 2
BOCA WEST
PB. 44 P65.104 & 105

0214-008

SUBDIVISION	46/4
BOOK	PLAT 46/4
FLOOD ZONE	B
QUAD	53
PLD NAME	MAHOGANY BEND OF B.W.
PAGE	FLOOD MAP # 2306
ZONING	2306
ZIP CODE	33454

46/4

MAHOGANY BEND OF B.W.